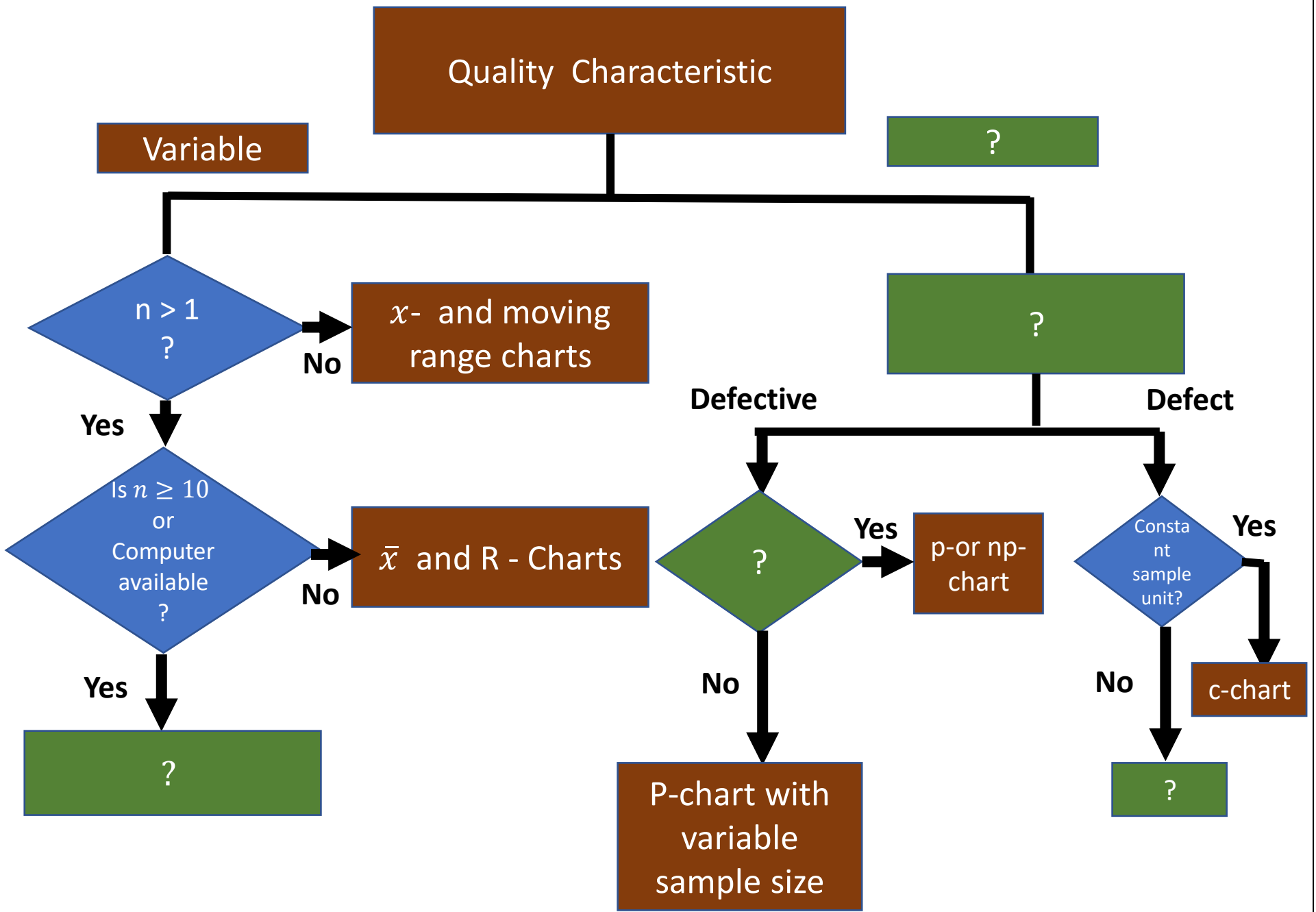




**Guidelines for choosing the right Control Chart**



Answers' Bank

Fill in the blanks from the choices listed below

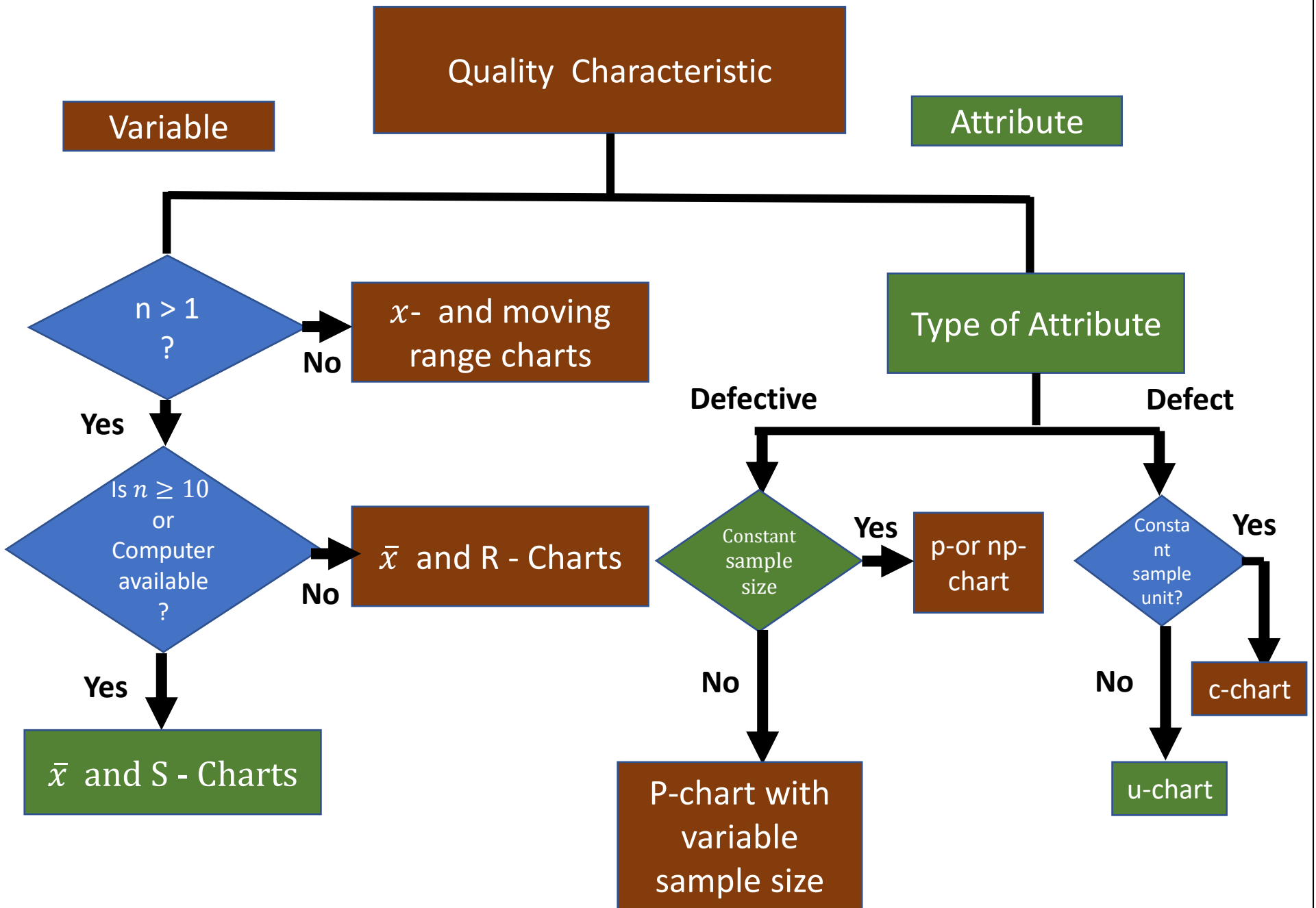
- |                         |                         |
|-------------------------|-------------------------|
| 1. Type of Attribute    | 4. Constant sample size |
| 2. $\bar{x} - s$ Charts | 5. Attribute            |
| 3. u-chart              |                         |



For Answers



# Guidelines for choosing the right Control Chart



For details on our online courses



#	Course Name	Course video total running time	Course Fee	Course Validity	Learning Mode
1	Analytical Tools for Improvements Stage 1	4 hours & 20 min	Rs. 1500/-	 <b>For all 5 courses</b>	 (OR) 
2	Analytical Tools for Improvements Stage 2	4 hours & 50 min	Rs. 1500/-		
3	QMS ISO9001:2015 Stage1	6 hours	Rs. 1500/-		
4	Control Plan Methodology	1 hr & 40 min	Rs. 1200/-		
5	Problem Solving Methodology (in Tamil)	7 hours	Rs.1950/-		

**Our Uniqueness** → E-book, Workbook, Self Assessment Test, Final Qualification Test and e-Certificate

↓ **Course Deliverables**

<p><b>Analytical Tools for Improvements Stage 1</b> ( 7QC &amp; New 7QC Tools)</p>	<p><b>Analytical Tools for Improvement Stage 2</b> ( 7QC &amp; New 7QC Tools )</p>	<p><b>QMS ISO 9001:2015 Stage 1</b> ( a base for IATF16949:2016 )</p>	<p><b>Control Plan Methodology as per IATF 16949:2016</b></p>	<p><b>Problem Solving Methodology</b></p>
<ul style="list-style-type: none"> <li>➤ Base 1</li> <li>➤ Base 2</li> <li>➤ Check Sheet</li> <li>➤ Pareto Diagram</li> <li>➤ Stratification</li> <li>➤ Flow Charts</li> <li>➤ Affinity Diagram</li> <li>➤ Relation Diagram</li> </ul>	<ul style="list-style-type: none"> <li>➤ Histogram</li> <li>➤ Normality Test</li> <li>➤ Box Plot</li> <li>➤ History of New 7 QC Tools</li> <li>➤ Tree Diagram</li> <li>➤ Matrix Diagram</li> <li>➤ Matrix Data Analysis</li> <li>➤ Likert Scale Methodolgy</li> </ul>	<ul style="list-style-type: none"> <li>➤ Fundamentals</li> <li>➤ What is ISO?</li> <li>➤ Seven Management Principles</li> <li>➤ Process Approach &amp; PDCA Cycle</li> <li>➤ Certification &amp; Documentation Overview</li> <li>➤ Clauses Overview</li> <li>➤ Link between ISO 9001 &amp; IATF16949</li> <li>➤ ISO 9001:2008 Vs ISO 9001:2015</li> </ul>	<ul style="list-style-type: none"> <li>➤ Fundamentals</li> <li>➤ Preparation of Control Plan</li> <li>➤ Types of Processes</li> <li>➤ How to construct Control plan ?</li> </ul> <div data-bbox="1209 2163 1562 2593" style="border: 1px solid black; padding: 5px;"> <p><b>For free SPES Course Videos</b> </p> <p>+ 91 99621 17222</p> <p>support@sripadhmam.com</p> <p><a href="http://www.sripadhmam.com">www.sripadhmam.com</a></p> </div>	<p><b>new</b></p> <ul style="list-style-type: none"> <li>➤ Basics</li> <li>➤ Fundamentals</li> <li>➤ Tools and Techniques used</li> <li>➤ A case study</li> <li>➤ A deep dive on 12 step approach</li> <li>➤ 8D Methodology</li> <li>➤ Introduction to DMAIC</li> <li>➤ Good PSM Practices</li> </ul>